

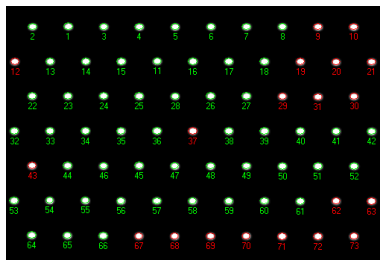
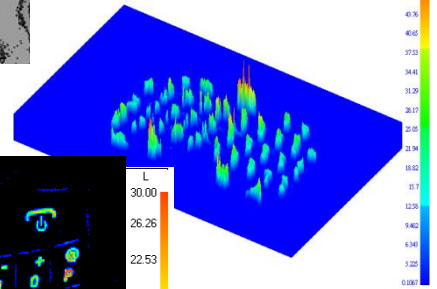
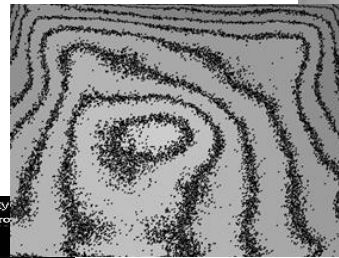
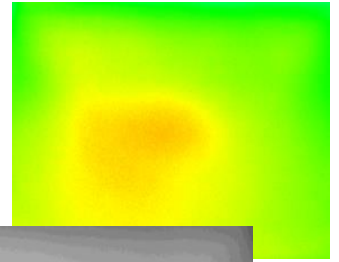
CCD 式輝度及色彩面量測儀 CCD Imaging Photometer and Colorimeter

特點 Features :

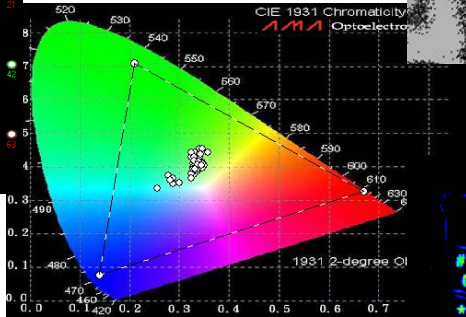
- 快速量測 顯示器, 背光模組, 手機按鍵, Light Bar, 照明燈具..等相關光學參數.
- 16 bits CCD具冷卻系統-Te Cooler 可降低及補償CCD之Thermal Noise.
- 採用標準光源,與Topcon或Minolta 色彩輝度計同步校正.

功能 Functions :

- 可全檢LCD Panel或背光模組面上之任一點之輝度、色座標值
- 可用顏色表示空間光強度分佈 (Light Intensity Distribution)
- Light Bar 的均齊度及篩選
- 量測Keypad上字型的輝度,色度及均齊度
- 燈具照明LED篩選及光強度分佈



Lighting



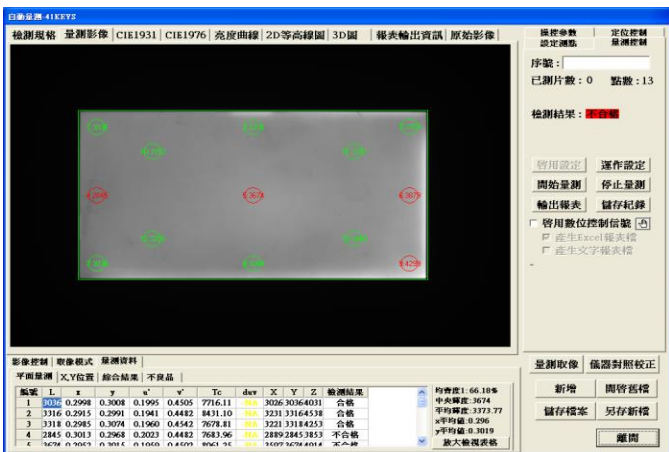
Keypad



Light bar

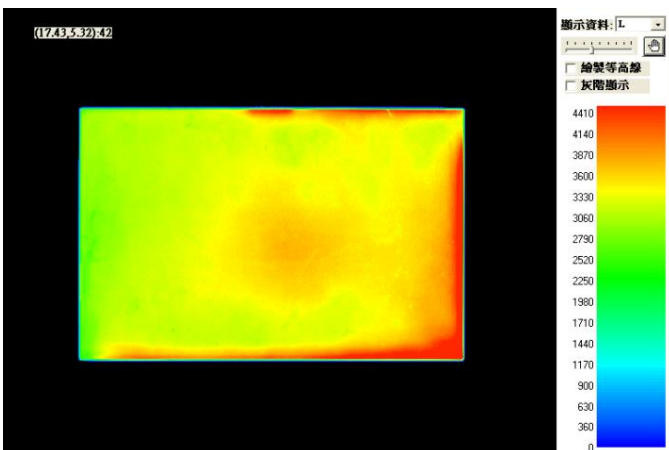


操作介面 Menu :



- 量測點設定允收標準,綠圈:pass, 紅圈: Fail

Panel /BL



- 用顏色來表示強度分佈

400KC/2000KC 參考規格 Specifications :

400KC / 2000K CCD式亮度面量測系統規格

- 2-Dimension Capabilities Luminescence ; Luminous Intensity
- Units cd/m^2 ; nit
- CCD Resolution 765 x 510 / 1600 x 1200 pixels
- Dark Current With Te cooler
- A/D Converter 16 bits
- Backfocus 17.53mm
- Luminance Range 0.5nit - 100,000nit with ND filter
- System Accuracy Luminescence $\pm 3\%$
Chromaticity Coordinates (x ; y) ± 0.005
- Short Term Repeatability Luminescence $\pm 1\%$
Chromaticity Coordinates (x ; y) ± 0.002
- Interface USB 2.0
- Camera Field of View (FOV) Depend on Lens
- Shutter Electromechanical
- Exposure 0.04 ~ 4 Sec. 10ms resolution
- Binning Modes 1 x 1 , 2 x 2 , 4 x 4
- Full Frame Download < 1 sec
- Dimension 127 x 101.6 x 63.5 mm
- Weight 0.6 kgw / 1.12 kgw