

# 5cm ~ 300cm Integrating Sphere Lumens Measurement System

## Model :

- SLM - 1T,2T,3T,4T,6T,8T,10T,2.5cm-25cm cd and Lumen measurement
- SLM - 12T 30 cm Integrating sphere lumens measurement system
- SLM - 20T 50 cm Integrating sphere lumens measurement system
- SLM - 40T 100 cm Integrating sphere lumens measurement system
- SLM - 60T 150 cm Integrating sphere lumens measurement system
- SLM - 75T 200 cm Integrating sphere lumens measurement system
- SLM-100T 250 cm Integrating sphere lumens measurement system
- SLM-120T 300 cm Integrating sphere lumens measurement system

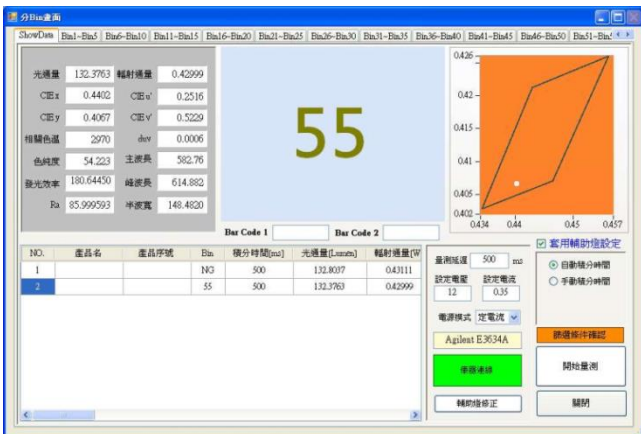
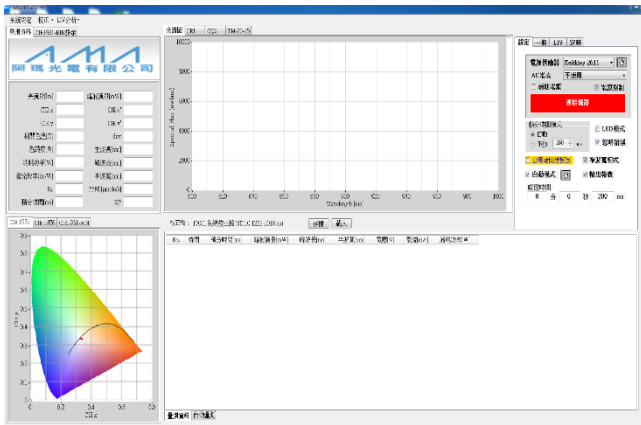


Integrating Sphere

## Functions :

- Measure the optical parameters of the following major – Total Luminous Flux (Lumens) , Luminance Intensity (cd) Total Spectral Flux (Watts) , Spectrum, Color Coordinate ( x ,y );( u' ,v' ) , Color Temperature ( Tc ) Peak and Dominant Wavelength , Purity , Efficiency ( Lum/ W ) Color Rendering Index ( CRI ) , TM-30-15, L-I-V Curves, Optima Efficiency, Life Time Measurement , S/P Ratio, PPF...

## Menu :



## Specifications :

1. Model
  - 12T /20T /40T /60T /75T /100T /120T
2. Measurement wavelength range
  - 360-1000 nm
3. Lumen measurement range
  - SLM-12T 0.2-2,500 Lum.
  - SLM-20T 0.6-7,000 Lum.
  - SLM-40T 2.4-25,000 Lum.
  - SLM-60T 5-100,000 Lum.
  - SLM-75T 30-250,000 Lum
  - SLM-100T 150-500,000 Lum
  - SLM-120T 200-650,000 Lum
4. System components
  - 4.1 Integrating Sphere
    - Inside coating Optowhite BaSO4 R~98%
    - Size 30cm ~ 300cm
    - Holes 2
    - SMA Connector SMA
    - External incident aperture 10cm/15cm/15cm/20cm/30cm/30cm
    - Fixed model H-type, Rail-type structure
  - 4.2 Auxiliary light
    - Fixed mode 20W/ 20W/ 20W/ 100W/ 100W/ 100W
    - bi-pin
  - 4.3 Standard lamp
    - Power (W) 20W/20W/100W/100W/100W/100W
    - Luminous flux (lumens) 300 Lum~ 3500 Lum.
5. Measuring light
  - 5.1 The maximum size of Lamp 20cm/35cm/75cm/120cm/150cm/200cm
  - volume 1/125
6. Integrating sphere measurement limit
  - 6.1 The maximum limit of A light source 12,500 (625W)
  - 6.2 The maximum limit of D-65 light source 25,000 (500W)
7. BaSO4 UV radiation limits <0.1W/cm2
8. The maximum temperature limit inside of the ball 80 C°
9. Power Supply Agilent E3632A or E3634A
10. Controller Auto- Point correction and auxiliary light
11. Ocean Optics Model 2000+
12. GPIB to USB Converter 82357B Agilent
13. Transmission fiber 600um
14. Chinese user interface LMS-100
15. Manual Chinese
16. Digital Control Interface (production lines) Optional

(Product specifications are for reference only, subject to change without notice)